

Video Operator: ZetaUser

Operator (Report): ZetaUser

### Sample Parameters

Sample Name: controlA-old-dilE5  
Sample Info 1:  
Sample Info 2:  
Sample Info 3:  
Electrolyte: PBS  
Temperature: 24.99 °C sensed  
pH 7.4 entered  
Conductivity: 15000.00 µS/cm sensed

### Instrument Parameters

Laser Wavelength: 488 nm  
Filter Wavelength: Scatter  
Sensitivity: 80  
Shutter: 100

### SOP: EV\_488\_scatter

Size Distribution 1 Cycle 11 Positions  
Description: EV/ 488nm laser

### Result (sizes in nm)

	Number	Concentration	Volume
Median (X50)	155.1	155.1	269.6
StdDev	78.6	78.5	144.4

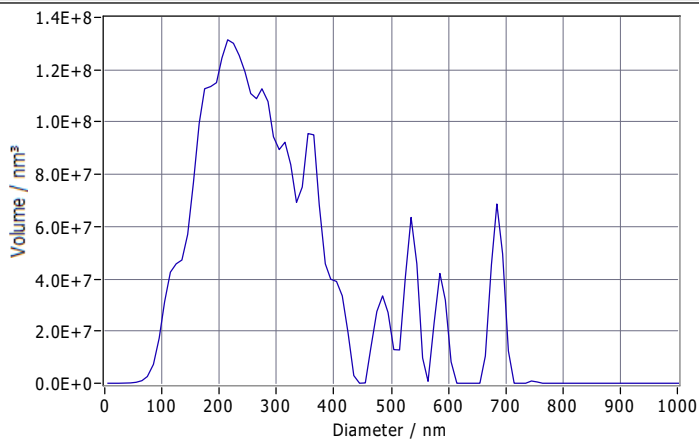
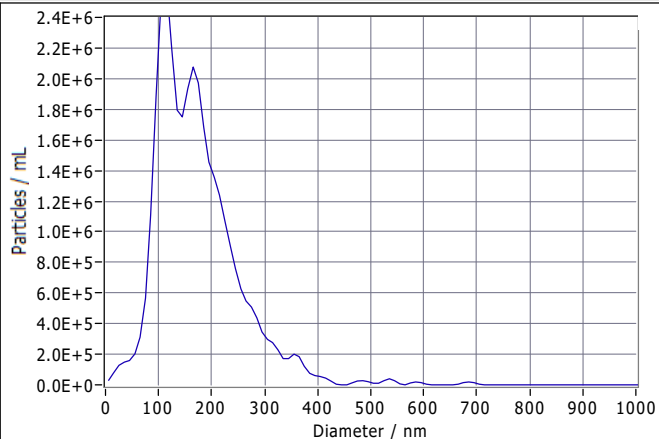
Concentration: 3.5E+7 Particles / mL  
Dilution Factor: 100000  
Original Concentration: 3.5E+12 Particles / mL

### Quality

Average Counted Particles per Frame: 82  
Number of Traced Particles: 705  
1 Positions Removed for Analysis

### Analysis Parameters

Max Area 1000, Min Area 10, Min Brightness 30, nm/Class: 10

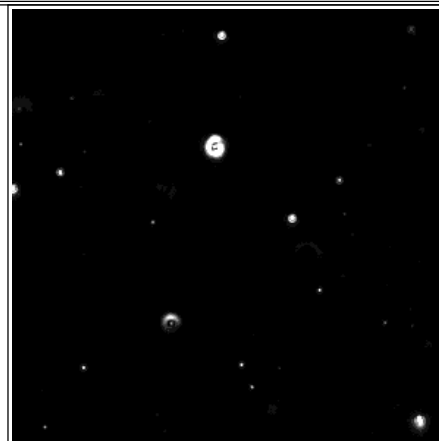


### Peak Analysis (Concentration)

Diameter / nm	Particles/mL	FWHM / nm	Percentage
165.1	2.1E+6	72.0	55.2
115.1	2.6E+6	57.2	44.8

### X Values (all sizes are given in nm)

	Number	Concentration	Volume
X10	89.5	89.5	156.0
X50	155.1	155.1	269.6
X90	266.9	266.9	531.2
Span	1.1	1.1	1.4
Mean	172.1	172.1	308.8
StdDev	78.6	78.5	144.4



Comment

(Signature)

Analyzed Video: Y:\Maikel\250328\20250328\_0003\_controlA-old-dilE5\_size\_488.avi

Experiment: 2025-03-28 11:40 ZetaView S/N 21-713, Software ZetaView (version 8.05.16 SP3)

Report: 2025-03-28 11:43 Software ZetaView (version 8.05.16 SP3)